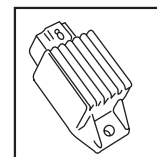




SERVICE INFORMATION

Sales division
Technical network leadership



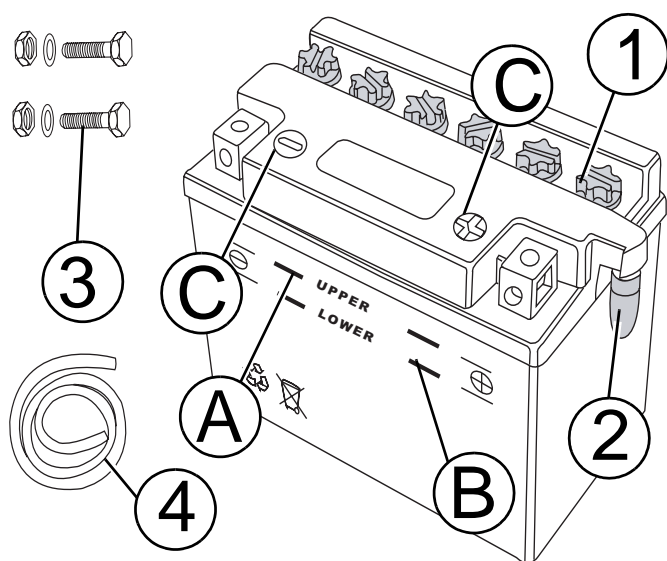
ALL BATTERY EQUIPPED MODELS (EXCEPT BATTERY WITHOUT MAINTENANCE)

SUPERSEDES PREVIOUS INFORMATION

SUBJECT: BATTERY CHARGE. BATTERY MAINTENANCE:

Battery preparation:

Battery kit :



1. Filler caps.
2. Air vent plug.
3. Terminal screws, washers and nuts.
4. Battery breather hose.

- A. Maximum level.
- B. Minimum level.
- C. Terminal polarity indicator.

Remove the 6 filler caps and the vent plug.

Fill all the battery cells with electrolyte to the upper level shown on the battery. (upper level)

	Dealership	Spare parts	Mechanic 1	Mechanic 2	Mechanic 3
SIGN ATUR					



Peugeot electrolyte P/N: 739733 1/2L, 752741 5L

The density shall be equal to 1.28 ± 0.01 Kg/L, that is to say a concentration of 32.3 to 34.7 %



Make sure that the fluid inside the battery is not higher than the maximum level in order to avoid spillage.

Leave the battery to stand for around half an hour.

First battery charge:



You must absolutely use a battery charger provided with a charge regulator which is suited to small capacities.

See document: Workshop tools 2.

The battery's maximum charging current is equal to 1 tenth of its capacity.

Charge the battery for 4 to 6 hours.

Leave the battery to stand for 4 to 6 hours.

Check the voltage of the battery.

- If the voltage is more than 12.7 volts.
 - Check and add electrolyte if necessary.
 - The battery can be installed on the vehicle.
- If the voltage is lower than 12.65 volts.
 - Charge again the battery for 4 to 6 hours.
 - Leave the battery to stand for 4 to 6 hours.
 - Check the voltage of the battery.
- If the voltage is still lower than 12.65 volts.
 - Change the battery.

Installing the battery:

Clean the terminals of the battery and the wiring harness lugs.

Connect the red wire lug to the battery's + terminal, and the green wire lug to the battery's - terminal.

Torque the battery terminals to 1 ± 0.2 Nm.

Install the battery breather hose.



**If the vehicle is delivered with 2 pipes, a black one and a clear one, install the black pipe.
Do not install the hose provided with the battery, but the one provided with the vehicle.**

Battery maintenance:

	Dealership	Spare parts	Mechanic 1	Mechanic 2	Mechanic 3
SIGN ATUR					

The battery voltage shall be checked every time the vehicle is periodically serviced and recharged if necessary.

- If the voltage is lower than 12.40 volts.
 - Charge the battery for 10 to 12 hours.
 - Leave the battery to stand for 4 to 6 hours.
 - Check the voltage of the battery.
- If the voltage is lower than 12.65 volts.
 - Change the battery.

Check the fluid level and top up if necessary with demineralized water.

Can of 1 L of demineralized water, P/N 973582.



Battery fluid shall be topped up after full charge of the battery and with demineralized water only.



Make sure that the fluid inside the battery is not higher than the maximum level in order to avoid spillage.

If the machine is stored for an extended period of time (more than 1 month, charge the battery and disconnect it.



A battery not used with discharge in 1 month.

The battery must be charged at least once a month.

Recharging the battery:



You must absolutely use a battery charger provided with a charge regulator which is suited to small capacities.

See document: Workshop tools 2.

The battery's maximum charging current is equal to 1 tenth of its capacity.

a 12 Ah battery can be recharged with a maximum 1.2 A current within 10 hours.

With a weaker current, you will need more time to recharge the battery.

Battery fluid shall be topped up after full charge of the battery and with demineralized water only.



Make sure that the fluid inside the battery is not higher than the maximum level in order to avoid spillage.

Leave the battery to stand for around half an hour.

	Dealership	Spare parts	Mechanic 1	Mechanic 2	Mechanic 3
SIGN ATUR					